

## Euro 20 Blutop

### The EURO 20 type BLUTOP

- is composed of a BE socket weld, PVC/PE tubes, and Blutop pipes
- type NG : DE75, 90, 110, 125 and 150



DN/OD	Closing direction	Accessories	References	Mass
mm				kg
75	CC	Without	RDL75KBXH	12,1
90	CC	Without	RDL90KBXH	12,4
110	CC	Without	RDM11KBXH	15,6
125	CC	Without	RDM12KBXH	22,3
140	CC	Without	RDM14KBXH	24,9
160	CC	Without	RDM16KBXH	29,8

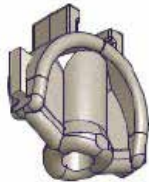
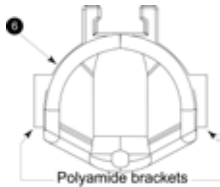
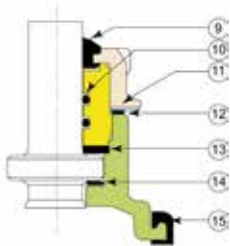
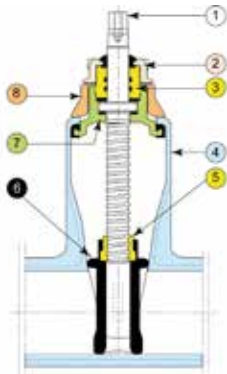
### Dimensions and mass

DN	° DE	Lt	Lu	P	D1	H	H1	h	K x K1	Number of turns	Mass
mm	mm	mm	mm	mm	mm	mm	mm	mm	mm		kg
65	75	333	159	87,0	89,7	363,0	283,0	60,0	105 x 174	17	12,1
80	90	333	135	99,0	126,0	361,0	275,0	66,0	105 x 174	17	12,4
100	110	335	138	108,5	146,6	419,5	322,0	77,5	111 x 194	23	15,6
125	125	374	144	115,0	163,2	487,5	382,5	85,0	126 x 220	28	22,3
125	140	374	158	108,0	155,6	487,5	373,5	94,0	126 x 220	28	24,9
150	160	387	159	114,0	175,3	535,0	410,0	105,0	136 x 257	32	29,8

### Label



## Material and coating



Item	Designation	Material	Coating
1	Operating stem	Stainless steel type X20Cr13 acc. EN10088-3	-
2	Bearing nut	Ductile Iron GS EN GJS 400-15 or 500-7	EVA (Ethylene Vinyl Acetate) 250 microns mini
3	Bush	Brass type CuZn39Pb2 acc. EN12164	-
4	Body	Ductile Iron GS EN GJS 400-15 or 500-7 acc. EN 1563	Blue Epoxy 250 microns
5	Operating nut	Brass type Cu Zn39Pb2 acc. EN12164	-
6	Gate	Ductile iron acc. EN1563 and EN681-1 selon EN 1563	EPDM on ductile iron and polyamide brackets
7	Bonnet	Ductile Iron GS EN GJS 400-15 or 500-7 acc. EN 15637	Blue Epoxy 250 microns
8	Yoke	Ductile Iron GS EN GJS 400-15 or 500-7 acc. EN 1563	EVA (Ethylene Vinyl Acetate) 250 microns
9	Van O Fra	Chloropren class 60 WA category acc. EN 681-1	-
10	Seal bush	Elastomer Nitrile NBR WRC 70	-
11	Lock washer	Stainless steel 304 or X2CrMoTi18-2 acc. EN 10088	-
12	Yoke-Bonnet-gasket	Nitrile NBR 70	-
13	Bearing bonnet joint	Polyamide type PA 6-6	-
14	Thrust washer	Polyamide type PA 6-6	-
15	Body bonnet gasket	Elastomer EPDM acc. EN681-1	-

## Type of joints

Pieces to be bought separately.

Material	Component	References					
		DE 75	DE 90	DE 110	DE 125	DE 140	DE 160
Ductile Iron	BLUTOP Vi gasket	JXL75CA	JXL90CA	JXM11CA	JXM12CA	JXM14CA	JXM16CA
PVC or PE	BLUPTOP gasket	-	-	-	-	JXM14BA	JXM16BA
	KLIKSO anchoring gland	-	-	-	-	JZM14VX	JZM16VX
	Izifit anchored gasket	JIL75CA	JIL90CA	JIM11CA	JIM12CA	-	-



Saint-Gobain Finland Oy/PAM

Merstolantie 16, 29200 Harjavalta • Strömberginkuja 2 (P.O. Box 70), 00380 Helsinki • Finland  
 Tel. +358 (0)207 424 600 • info.pamline@saint-gobain.com • www.pamline.fi  
 VAT FI09515553 • Y-0951555-3 • IBAN: FI44 8421 0710 0073 15 • BIC: DABAFIHH

