

Modbus RTU Module for heat meters

Parameters which can be changed:

- ModBus address (Slave ID);
- Update Rate Data from Meter;
- Baud Rate
- Parity
- Stop Bits

Parameters can be changed using Axis Industries software called “Modbus Reader”.

1. First of all you need to open attached reading scenario called “AxisModbus.scn”. When it is opened, the main window which present in Fig 1 will be seen.

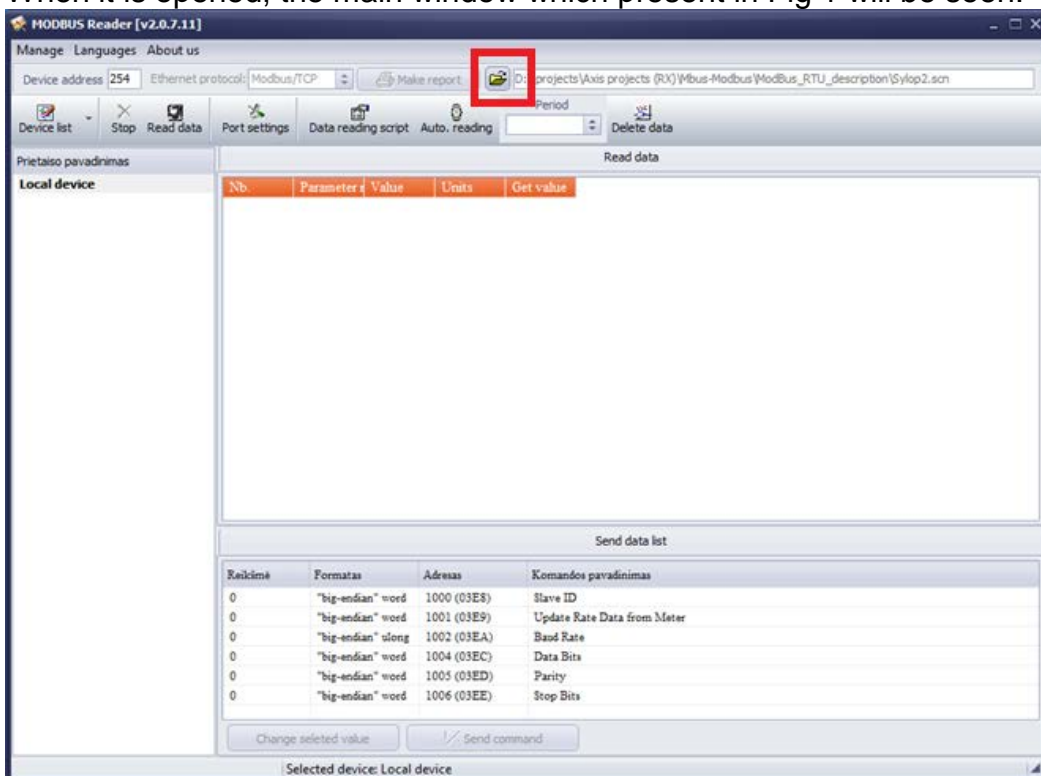
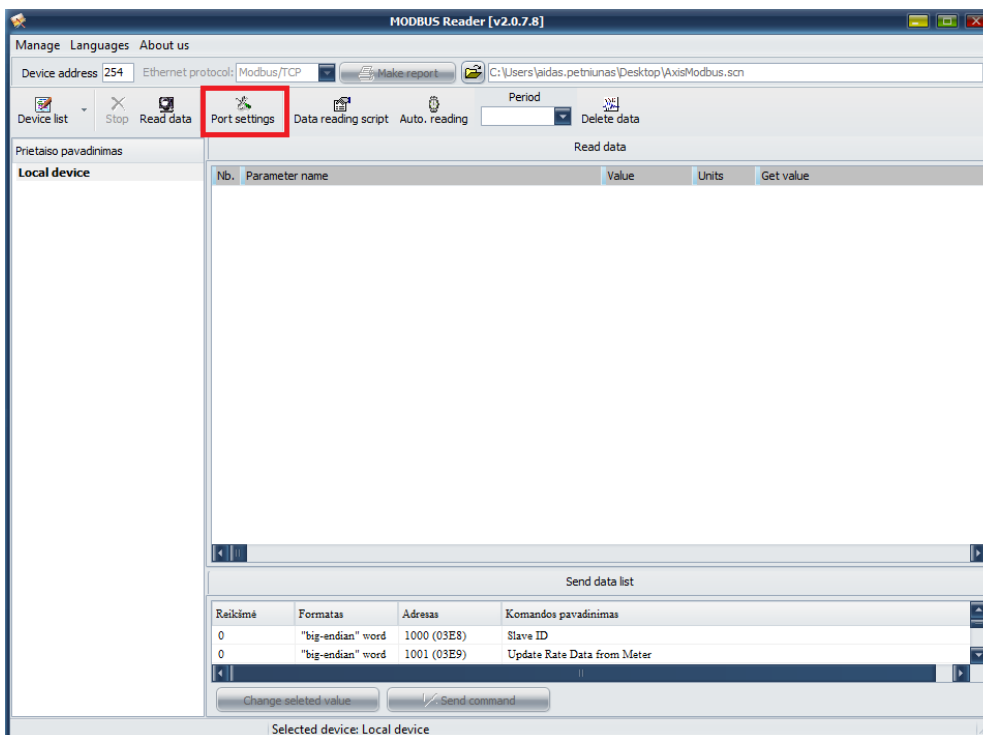
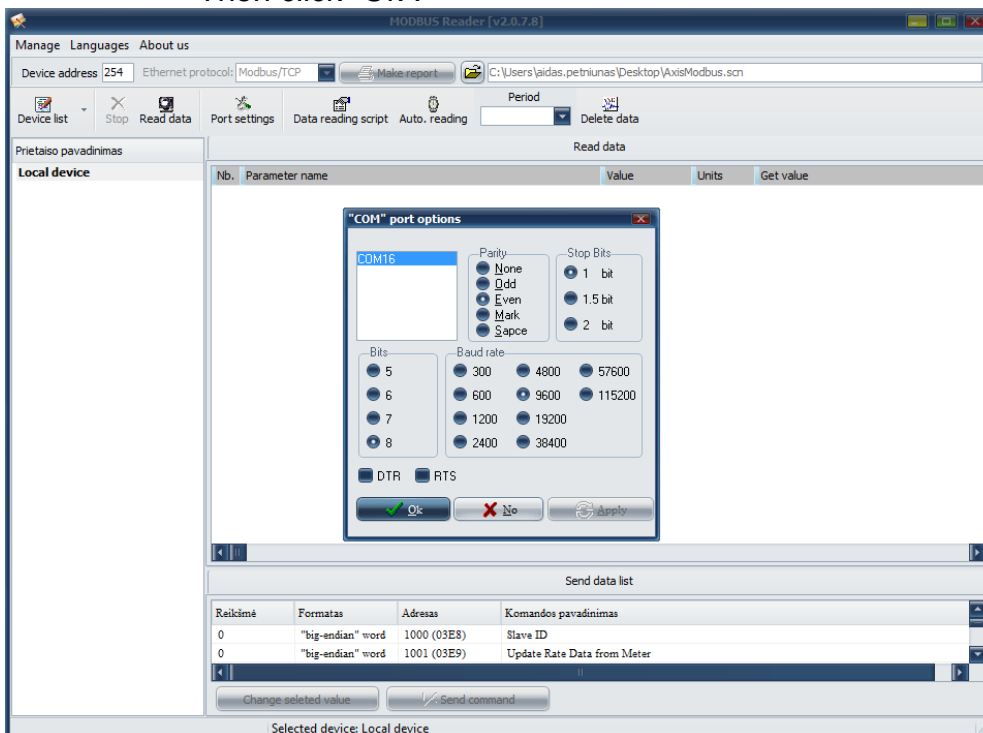


Fig 1 – Modbus Reader

2. Then change device address, default is “1”.
3. Then click “Port Settings”.

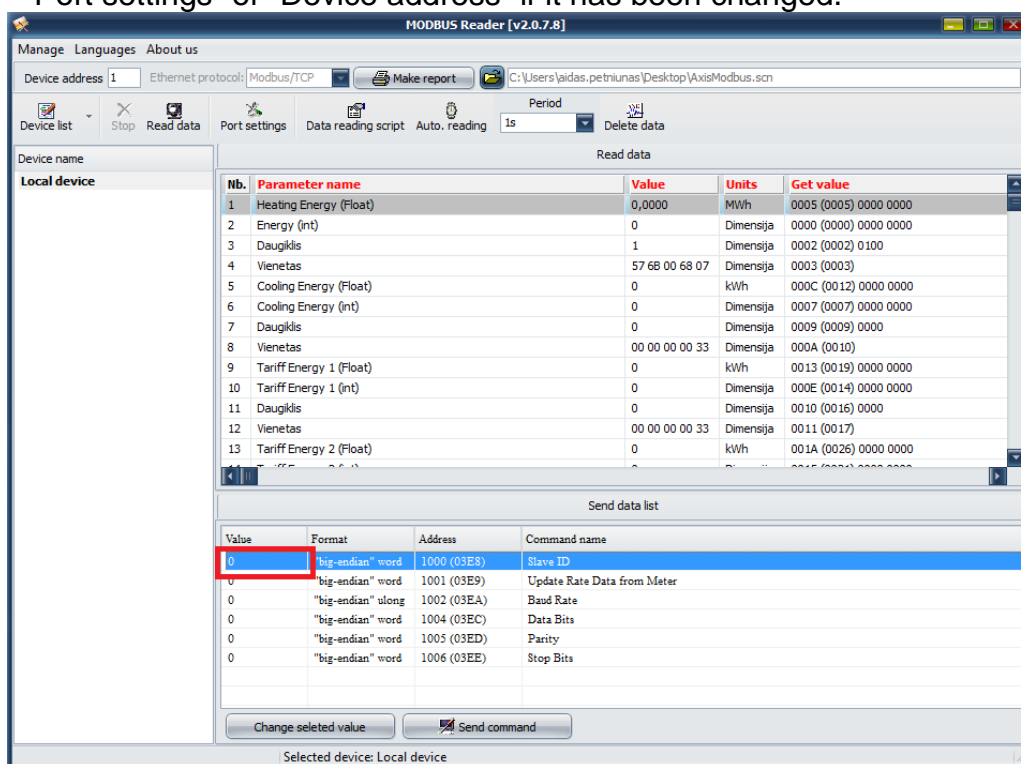


4. Then immediately opens new window. In that new window choose the correctly parameters to read device.
 - Parity – “Even”
 - Stop Bits – “1 bit”
 - Bits – “8”
 - Baud rate – “9600 (default)”
 Then click “Ok”.



5. Read the actual Modbus card.

- In the value column near the parameter which you want to change simply enter the changeable value and then press the button "Send command". After this the parameter will be changed. In order to read Modbus card again you have to change "Port settings" or "Device address" if it has been changed.



- If you need reset the ModBus module, you need to turn off the power supply from the 230V. Wait when the module discharge (about 5-10sec) and hold on the module "set" button then plug in 230V. You need to hold on the button until "LINK" led blinked. After all, the ModBus address back to default address.